

COLLABORATIVE RESEARCH CENTER 837

## INTERACTION MODELING IN MECHANIZED TUNNELING

RUB

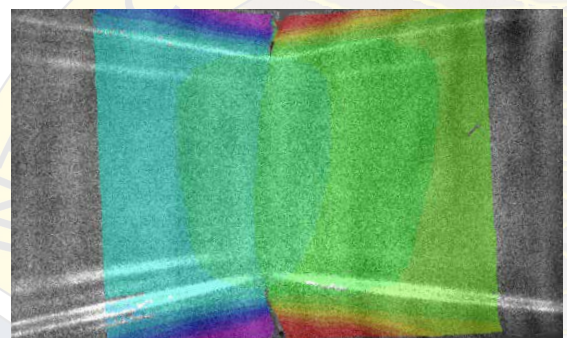
# MATERIAL CHARACTERIZATION AND STRUCTURAL DIAGNOSIS USING COMBINED EXPERIMENTAL AND NUMERICAL TOOLS

Prof. Gabriella Bolzon

*Politecnico di Milano, Italy*

23.02.2017 – 14:30 – IC 6/156

The combination of non-standard mechanical testing procedures, full-field monitoring systems and simulation models of the performed experiments is getting increasing popularity. In fact, this blended approach allows to exploit the experimental output effectively, to increase substantially the reliability of the measurements and to improve the accuracy of the model predictions. Specific reduction techniques also permit to decrease the computational burden drastically and to obtain results in almost real time, as required for routine use in industrial environment. The illustration of some relevant examples provides an overview of the research activities carried in this context at the Politecnico di Milano.



**Guests are welcome!**